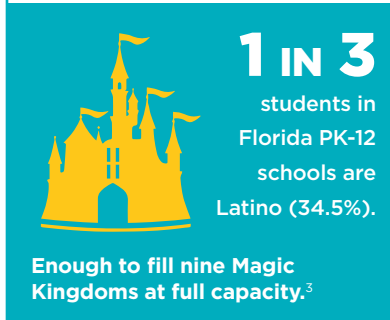


Florida has the **3RD LARGEST Hispanic* student population¹** and **3RD LARGEST English learner (EL) population in the country.²**



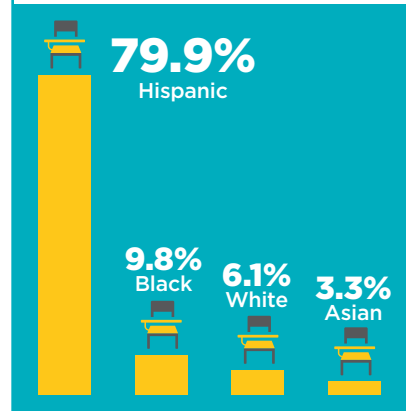
963,782 Hispanic students enrolled in Florida's public schools (SY 2019-20).



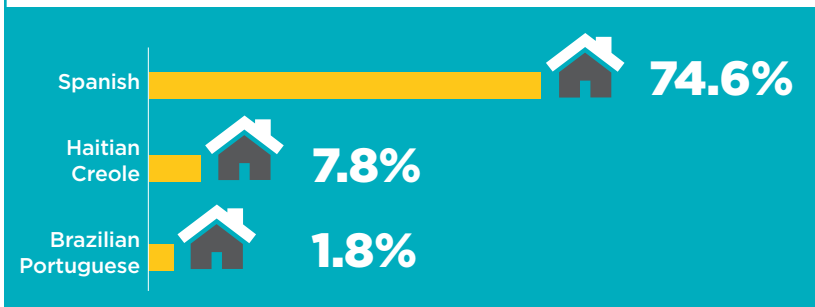
291,075 TOTAL ELs in Florida public schools (PK-12).

ELs represent 1 in 10 Florida students.⁴

Demographics of ELs in Florida⁵



Most Common Home Languages of ELs⁶

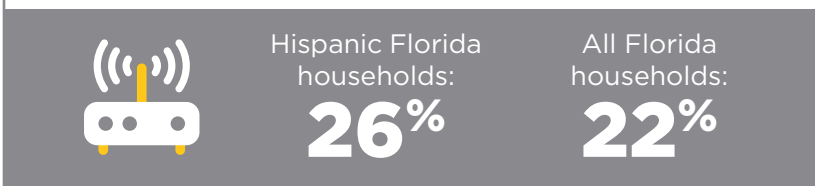


6 out of every 10

Latino students in Florida are "economically disadvantaged."⁷



Households **without** High-Speed Home Internet⁸



Florida Children Under the Age of 18



TOP DISTRICTS WITH LATINO STUDENT ENROLLMENT

by Numbers (Spring 2020)¹⁰

District	(# of students)
Miami-Dade:	250,337
Broward:	95,931
Orange:	90,738
Hillsborough:	84,356
Palm Beach:	70,687

TOP DISTRICTS WITH LATINO STUDENT ENROLLMENT

by Percentage (Spring 2020)¹¹

District	(By % of student enrollment)
Miami-Dade:	72%
Hardee:	64%
Osceola:	62%
Hendry:	55%
Collier:	53%

* The terms "Hispanic" and "Latino" are used interchangeably by the U.S. Census Bureau and throughout this document to refer to persons of Mexican, Puerto Rican, Cuban, Central and South American, Dominican, Spanish, and other Hispanic descent; they may be of any race. This document may also refer to this population as "Latinx" to represent the diversity of gender identities and expressions that are present in the community.

SHORTAGE OF EDUCATORS CERTIFIED to Teach ELs in Florida¹²

ESOL courses rank 3rd in courses taught by teachers not certified in the appropriate field.

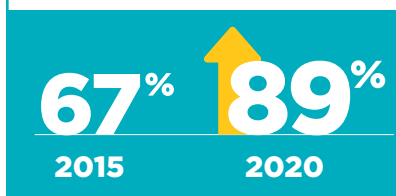
Note: Based on a comparison of 24 subject areas by Florida Department of Education.

Florida graduation rates for all students, including those with disabilities, have seen an upward trend in recent years.

THIS INDICATES THAT CONTINUED, TARGETED SUPPORT IS NEEDED IN FUTURE TO PREVENT THE STATE FROM REGRESSING.¹³



Florida Migrant Student 4-Year High School Graduation Rates¹⁴



12.9% OF ELS IN FLORIDA have been identified as students with disabilities.

13.6% OF HISPANIC STUDENTS IN FLORIDA have been identified as students with disabilities.¹⁵

2019 NAEP ASSESSMENTS:

Florida students scoring “at or above basic.”¹⁷

4th Grade Reading

EL: 33%
Non-EL: 74%

4th Grade Math

EL: 68%
Non-EL: 90%

Enrollment in Advanced Courses¹⁶

- Latino students represent **1.92%** of Florida’s gifted education students.
- ELs represent **0.026%** of Florida’s gifted education students.



About UnidosUS

UnidosUS, previously known as NCLR (National Council of La Raza), is the nation’s largest Hispanic civil rights and advocacy organization. Through its unique combination of expert research, advocacy, programs, and an Affiliate Network of nearly 300 community-based organizations across the United States and Puerto Rico, UnidosUS simultaneously challenges the social, economic, and political barriers that affect Latinos at the national and local levels.

For more than 50 years, UnidosUS has united communities and different groups seeking common round through collaboration, and that share a desire to make our country stronger. For more information on UnidosUS, visit www.unidosus.org, or follow us on [Facebook](#), [Instagram](#), and [Twitter](#).

Endnotes

- 1 U.S. Department of Education, National Center for Education Statistics, Common Core of Data (CCD), “State Nonfiscal Public Elementary/Secondary Education Survey”, <https://nces.ed.gov/ipeds/data/ipedsdatacenter/dataexplorer.aspx> (accessed December 8, 2020), Table v. 1a
- 2 U.S. Department of Education, ED Data Express, “Data Download Tool”, <https://eddataexpress.ed.gov/> (accessed January 5, 2021).
- 3 *PK-20 Portal, Enrollment*. Florida Department of Education, Division of Accountability, Research and Measurement, Bureau of PK-20 Education Reporting and Accessibility. Tallahassee, FL, 2021, <https://edstats.fldoe.org/SASPortal/public> (accessed January 8, 2021).
- 4 Ibid.
- 5 Ibid.
- 6 Courtney Geary and Julie Sugarman, *English Learners in Florida Demographics, Outcomes, and State Accountability Policies*. (Washington, DC: Migration Policy Institute, 2018), 3, https://www.migrationpolicy.org/sites/default/files/publications/EL-factsheet2018-Florida_Final.pdf (accessed January 8, 2021).
- 7 Ibid. Note: Per the Florida Department of Education, “Economically disadvantaged” students are students determined to be eligible for free and reduced price meals under the National School Lunch Program.
- 8 *Students of Color Caught in the Homework Gap* (Washington, DC: Alliance for Excellent Education, National Urban League, National Indian Education Association, UnidosUS, 2020), Appendix A, https://futureready.org/wp-content/uploads/2020/08/HomeworkGap_FINAL8.06.2020.pdf (accessed January 8, 2021).
- 9 *State Immigration Data Profiles, Florida, Migration Data Hub* (Washington, DC: Migration Policy Institute, 2018). <https://www.migrationpolicy.org/data/state-profiles/state-demographics/FL/> (accessed January 8, 2021).
- 10 Ibid.
- 11 Ibid.
- 12 *Identification of Critical Teacher Shortage Areas* (Tallahassee, FL: Florida Department Education, 2020), 2-3, <http://www.fldoe.org/core/fileparse.php/7584/urlt/CTSA1920.pdf> (accessed January 8, 2021).
- 13 *PK-20 Portal, State Graduation Rates by Subgroup*. Florida Department of Education, Division of Accountability, Research and Measurement, Bureau of PK-20 Education Reporting and Accessibility. Tallahassee, FL, 2021, <https://edstats.fldoe.org/SASPortal/public> (accessed January 14, 2021).
- 14 Ibid.
- 15 Ibid.
- 16 Ibid.
- 17 National Assessment of Educational Progress (NAEP). “NAEP Data Explorer,” <https://www.nationsreportcard.gov/ndecore/landing> (accessed January 8, 2021), Florida Math & Reading, Grade 4, 2019. Status as English Learner, Achievement levels – cumulative.