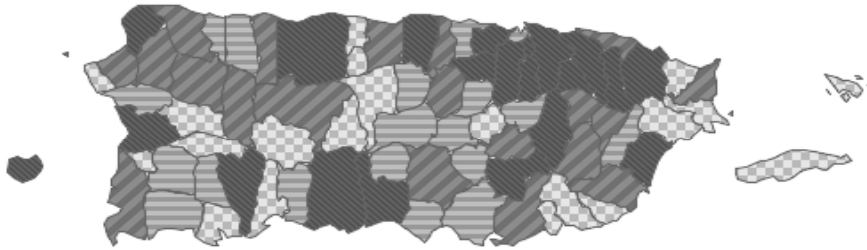


Municipio Snapshot

2005/2006

Characteristics of Children and Youth in Puerto Rico,
by Municipio*

San Juan



Total Population Under Age 18 in Puerto Rico, 2000¹

Socioeconomic Indicators

Total Population ²	Number	%
San Juan	426,618	11%
Puerto Rico	3,927,776	100%
Estimated Population Under Age 18 ²	Number	%
San Juan	98,122	23%
Puerto Rico	1,018,658	26%
Births, by Mother's Place of Residence ³	Number	%
San Juan	5,326	11%
Puerto Rico	50,561	100%
Children in Single-Parent Families ²	Number	%
San Juan	43,592	55%
Puerto Rico	435,563	47%
Female Headed Households ²	Number	%
San Juan	40,099	50%
Puerto Rico	303,285	37%
Children Below the Poverty Line ²	Number	%
San Juan	52,522	54%
Puerto Rico	555,375	56%

Definition: Total population is the number of people from all ages, male and female, living in a specific geographical area.

Definition: Estimated population under 18 is the number of people under 18 years of age living in a specific geographical area.

Definition: Births by mother's place of residence is the number of live births from mothers residing in a specific location.

Definition: Children in single-parent families includes the percentage of children under age 18 who live with their own single parent, either in a family or subfamily. In this definition, single-parent families may include cohabiting couples and do not include children living with stepparents.

Definition: The number or share of families with their own children under 18 years of age living in the household, headed by a female without a spouse present in the home. "Own children" includes never-married persons under age 18 who are the sons or daughters of the heads of the household. The heads' stepchildren and adopted children are also counted as "own children."

Definition: The number or share of people under 18 years of age, regardless of marital status, who are related to the head of the household. It does not include the head's spouse or foster children, regardless of age. The federal poverty definition consists of a series of thresholds based on family size and composition. In 2006, the poverty threshold for a family of two adults and two children was \$20,444. Poverty status is not determined for people in military barracks or institutional quarters, or for unrelated individuals under the age of 15 (such as foster children).

* The production of this profile was made possible by funding from the Annie E. Casey Foundation, through its support of NCLR's KIDS COUNT Puerto Rico Project. The contents are the sole responsibility of NCLR, and do not necessarily reflect the opinions of NCLR's funding sources.

Children's Health

Low Birth Weight Babies, by Mother's Place of Residence ³	Number	%
San Juan	688	12.9%
Puerto Rico	6,488	12.8%

Infant Mortality Rate ³	Number	Rate
San Juan	66	12.3
Puerto Rico	467	9.2

Child Mortality Rate ³	Number	Rate
San Juan	16	21
Puerto Rico	111	14

Definition: The number or share of live births weighing less than 2,500 grams (5.5 pounds). The data are reported by place of mother's residence, not place of birth. Each year there is a small number of births in which the weight of the newborn is not recorded, and births of unknown weight are not included in these calculations.

Definition: Infant deaths is the number of deaths occurring to infants under one year of age. Infant mortality rate is the number of deaths occurring to infants under one year of age, per 1,000 live births. The data are reported by mother's place of residence, not place of death.

Definition: Child deaths is the number of deaths to children between the ages of 1 and 14, from all causes. Child mortality rate is the number of deaths to children between the ages of 1 and 14, from all causes, per 100,000 children in this age range. The data are reported by place of residence.

Adolescent Concerns

Teen Birth Rate ³	Number	Rate
San Juan	346	40
Puerto Rico	3,562	40

Teen Death Rate ³	Number	Rate
San Juan	19	66
Puerto Rico	192	65

Teens that are High School Dropouts ²	Number	%
San Juan	1,768	8%
Puerto Rico	20,223	9%

Teens that Are Attending School and Are Not Working ²	Number	%
San Juan	1,724	7%
Puerto Rico	33,637	14%

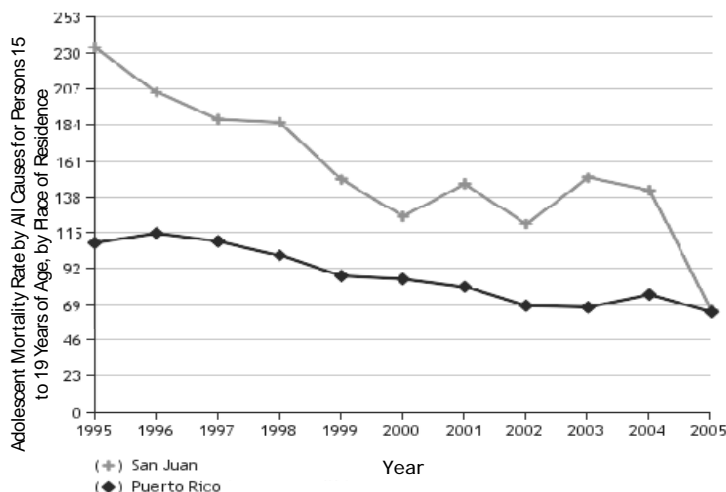
Definition: The number of live births to teenagers between the ages of 15 and 17. Data reflect the mother's place of residence, rather than place of birth. This measure of teenage childbearing focuses on the fertility of all females ages 15 to 17, regardless of marital status. Teen birth rate is the number of births to teenagers between the ages of 15 and 17, per 1,000 females in this age group.

Definition: Teen deaths is the number of deaths from all causes to teens between ages 15 and 19, per 100,000 teens in this age group. The data reported by place of residence, not the place where death occurred.

Definition: The percent of teens that are high school dropouts is the percent of teenagers between ages 16 and 19 who are not enrolled in school and are not high school graduates. Those who have a GED or equivalent are included as high school graduates. The measure used here is defined as a status dropout rate.

Definition: The percent of teens not attending school and not working is the percent of teenagers between ages 16 and 19 who are not enrolled in school (full-time or part-time) and are not employed. This measure is sometimes referred to as "idle teens" or "disconnected youth."

Teen Death Rate (1995-2005)⁴



For more information, contact:

KIDS COUNT - Puerto Rico

654 Ave. Muñoz Rivera Suite 1003
 San Juan, Puerto Rico 00918-4130
 Telephone (787) 641-0546
 Fax (787) 641-0545
 Email nclr-pr@nclr.org
 or visit: <http://kidscount.nclr.org>



Sources:
¹U.S. Census Bureau, 2000 United States Census
²U.S. Census Bureau, 2005 Puerto Rico Community Survey
³Census Data and Health Statistics Center, Faculty of Biosocial Sciences and Graduate School of Public Health, Medical Sciences Campus, University of Puerto Rico, San Juan: Puerto Rico, October 6, 2008.
⁴CLIKS: Community-Level Information on Kids, <http://kidscount.nclr.org/> (line graph for *municipio* data; accessed October 29, 2008).